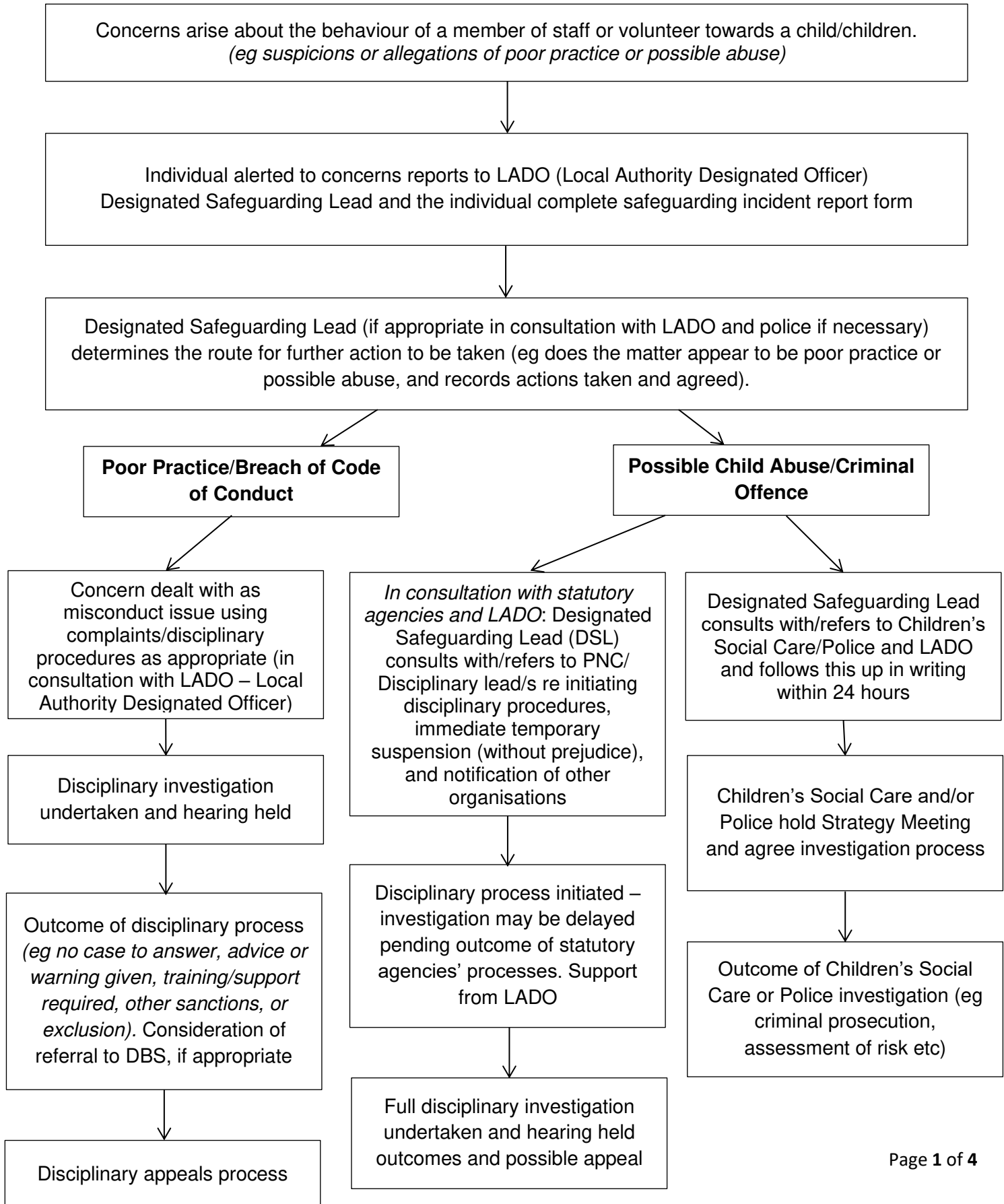




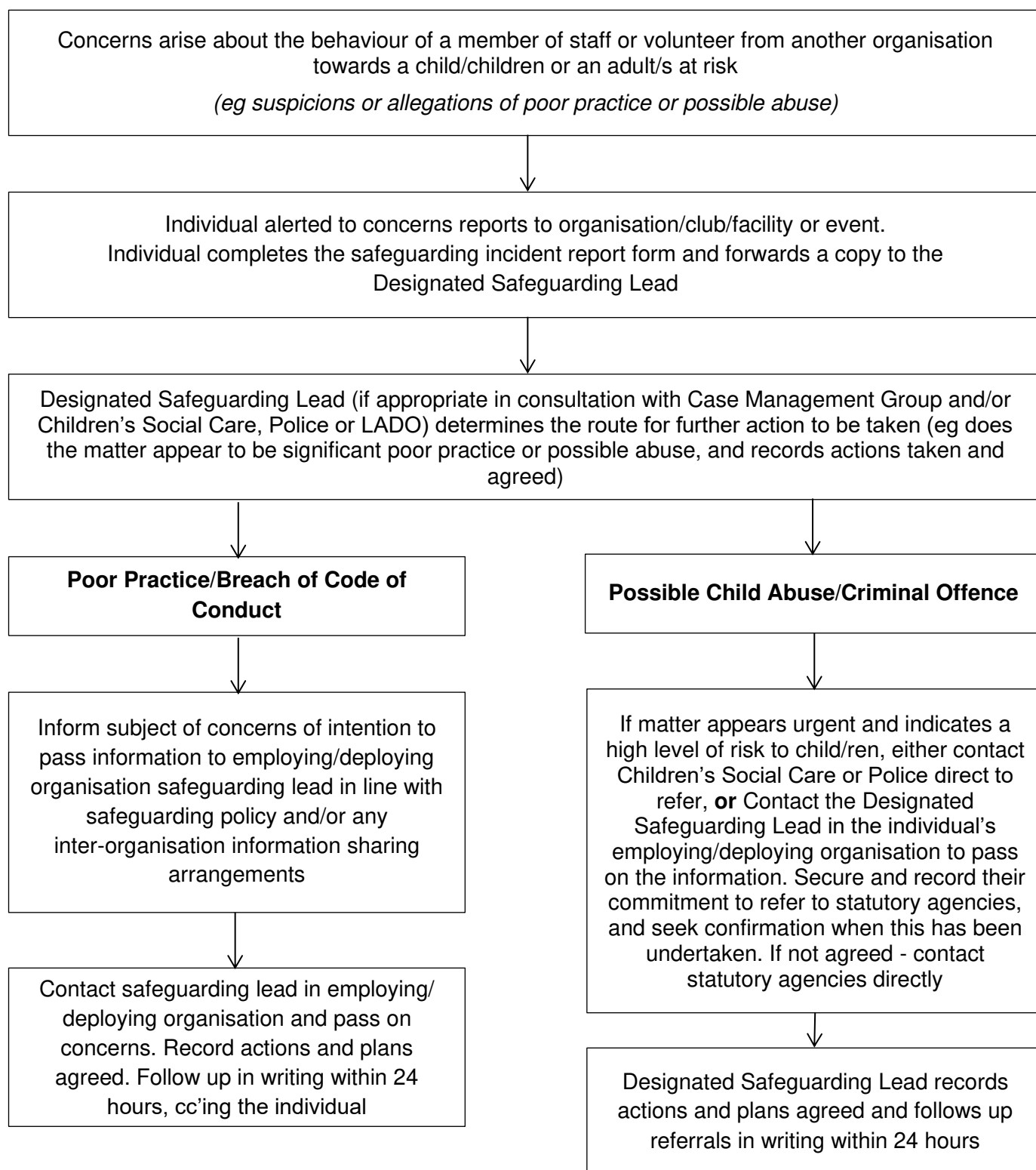
Safeguarding Concerns Reporting Procedures

1. About the behaviour of a Mare and Foal Sanctuary staff member or volunteer (eg allegation about a member of staff or volunteer's behaviour towards a child)



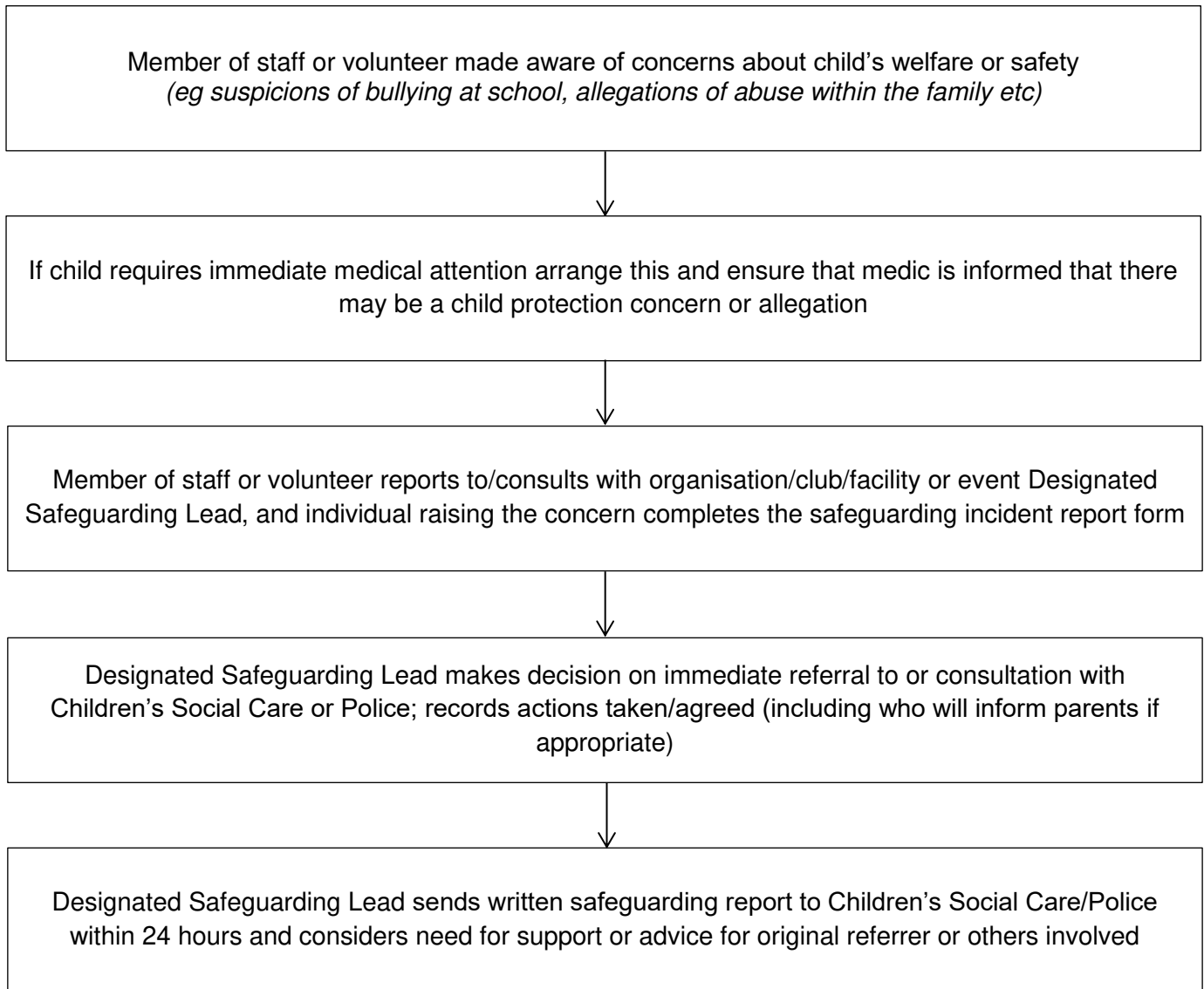
2. About the behaviour of another organisation's staff member or volunteer

(eg allegations reported about an individual working for a visiting organisation)



3. About children and young people

(eg at home, school or in the community)



4. About an Adult at Risk

(eg at home, from support group or in the community)

